

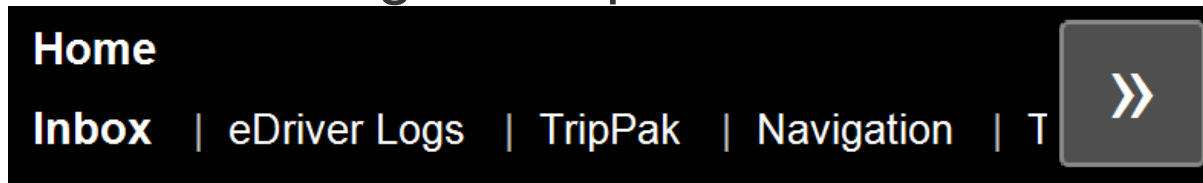
# Navigo Driver Training

A MOBILE COMMUNICATIONS AND ONBOARD COMPUTING COMPANY

[www.peoplenetonline.com](http://www.peoplenetonline.com)

# Accessing Navigo

- Touch the Navigation option in the Home Menu.

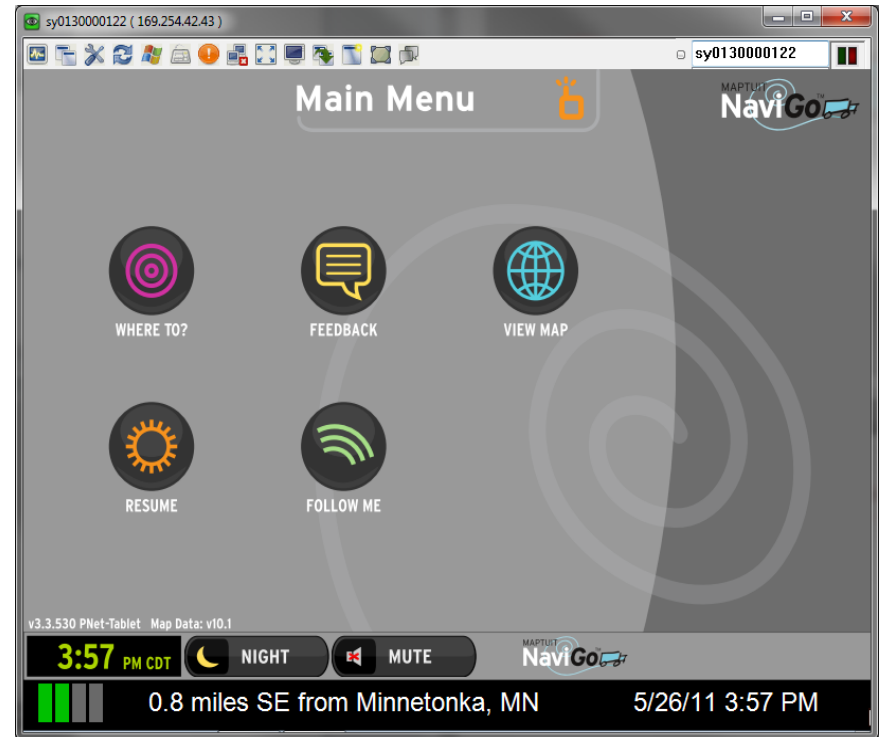


# Navigo Launch Process

- Navigo application opens with functions greyed out.
- A data call is placed to Navigo servers
  - » 2<sup>nd</sup> green light flashes to indicate data call in progress.
- Data call will complete in approximately 60 to 90 seconds.
- Navigo application changes to full color.

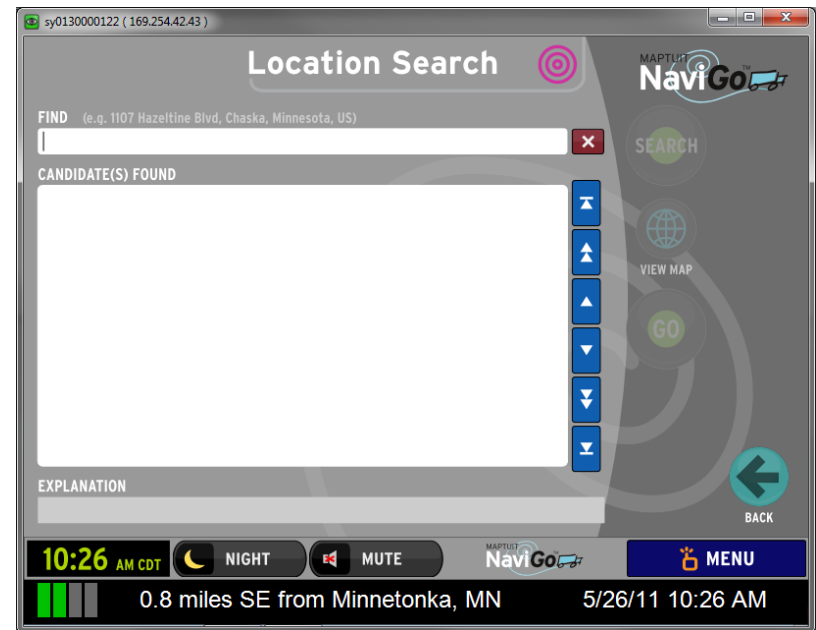
# Navigo Main Menu Functions

- Where to?: location search function.
- Feedback: provide feedback on route.
- View Map: opens map centered on current location.
- Resume: resume previously requested route.
- Follow me: map opens and follows truck's movement.
- Night mode changes background to black.
- Mute turns off voice directions.



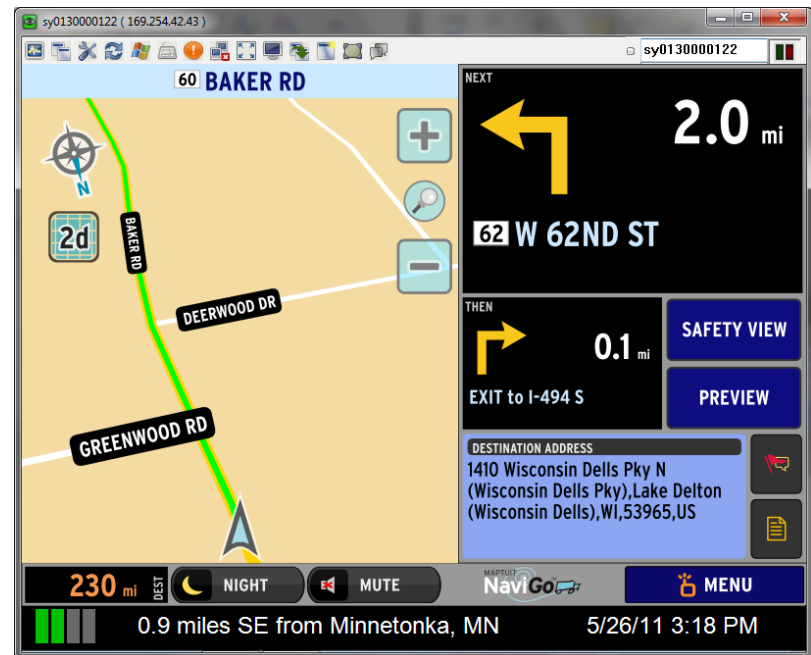
# Location Search

- Enter address in Find box and touch Search.
- Data call placed to Navigo server.
- Search results display in Candidates found box.
- Touch candidate to highlight and Go to request route.
  - » Data call placed to retrieve route from Navigo.



# Directions Map View

- Map displays current location and first two moves.
- Safety view hides map and displays only text directions.
- Preview displays each move on route.
- Destination address displayed.
- + and – are zoom functions.
- Select Menu to return to Navigo Main Menu.



# Preview Mode

**EXIT to I-94 E/MADISON**

1410 Wisconsin Dells Pky N

**12 STEPS** 230 mi

5 1.5 mi I-494

6 3.1 mi I-494

**7 12.9 mi EXIT to I-94 E/MADISON**

8 0.5 mi I-94

9 155 mi I-94

NAV VIEW SAFETY VIEW

3:17 PM CDT NIGHT MUTE NaviGo MENU

0.9 miles SE from Minnetonka, MN 5/26/11 3:17 PM

# Safety View

The screenshot displays a navigation system's 'Safety View' interface. At the top, a light blue bar shows the current route as '60 BAKER RD'. Below this, the interface is divided into two main sections. The top section, labeled 'NEXT', features a large yellow arrow pointing left, indicating a left turn onto '62 W 62ND ST', with a distance of '2.0 mi'. To the right of this section are two vertical buttons: a top button with a red speech bubble icon and a bottom button with a yellow document icon. The bottom section, labeled 'THEN', features a large yellow arrow pointing right, indicating an 'EXIT to I-494 S', with a distance of '0.1 mi'. To the right of this section are two stacked blue buttons labeled 'NAV VIEW' and 'PREVIEW'. At the bottom of the screen, a dark grey bar contains several controls: a '230 mi DEST' indicator, a 'NIGHT' mode button with a moon icon, a 'MUTE' button with a speaker icon, the 'NaviGo' logo with 'MAPTUNE' above it, and a 'MENU' button with a gear icon. Below this bar, a status bar shows a green signal strength indicator, the text '0.9 miles SE from Minnetonka, MN', and the time '5/26/11 3:13 PM'.



# Exiting Navigo

- Touch the TABLET update bar at the bottom of the screen.
- Press the blue hard button on the TABLET.

# Automated Workflow & Navigo Routing

[www.peoplenetonline.com](http://www.peoplenetonline.com)

# Automated Workflow Navigo Route Process

- Select Navigation from Main Menu before starting automated workflow route.
- Press blue button to exit Navigo.
- Select PACOS on Main Menu and Start to begin trip.
- Touch Route and TABLET automatically requests directions to first stop.
- Upon arrival at first stop, pop up appears to request directions to next stop.